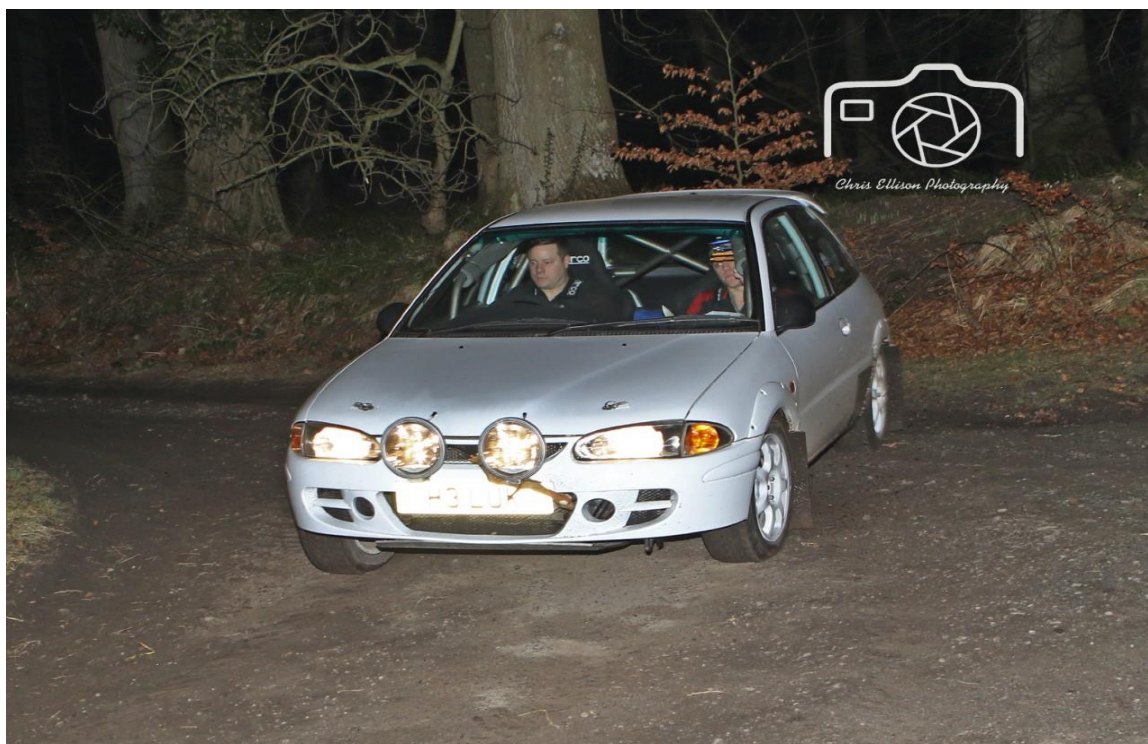


Hexham & District Motor Club



2018 winners - Matt Flynn & Rob Bryn Chicken (photo courtesy of Chris Ellison)

Extratimegifts.com John Robson & Hexham Historic Rally 2019

Roadbook 1

 **extratimegifts**
It's never too late for the perfect gift

Motorsport



Trophies & Awards

Makers Of Personalised Gifts
Sales@ExtraTimeGifts.com
ExtraTimeGifts.com
01325 324503



So you've done the right thing and saved for when you retire. But now what?

Maybe you have several pension pots? What about old employer's pension schemes? How does your state pension fit into your plans? Do you have a plan?

Let us help you make the right choice

You now have more choices than ever when you retire. But there's no point having those choices if you don't make the right decisions. After all, you don't want to run out of money.

When you approach retirement let us help you make the right choices. Our approach is simple: we find out all about you; we understand your goals; we get to know your appetite for risk. We then use all the tools and expert knowledge at our disposal to offer you solutions. Only then can you make an informed choice.

THE VALUE OF PENSIONS AND INVESTMENTS CAN FALL AS WELL AS RISE AND YOU CAN GET BACK LESS THAN YOU INVESTED.

To learn more about how we can help please contact
Andrew Fish, DipFA Financial Planning Consultant:

☎ 07866 534476

✉ andrew.fish@charlesderby.com

<http://www.charlesderby-andrewfish.com/>

 CHARLES DERBY

Hexham & District Motor Club



This roadbook contains the navigation for the first half of the rally
you will be given the second roadbook at MTC18

You can't leave the start venue for another 30 minutes, as you leave
you must get your time card signed.

Follow arrows to exit (one way system) via tunnel, as detailed in the finals!

In the event of a problem, please contact Jonathon Webb on 07929 229413
obviously reception may be limited so please leave a message

Enjoy your night

Hexham & District Motor Club



You need to plot the following, it will help with the rest of the navigation!

SGW's

map 87

824 542

801 $\frac{3}{4}$ 551

833 $\frac{3}{4}$ 556 $\frac{1}{2}$

825 $\frac{3}{4}$ 552

844 512 $\frac{1}{2}$

847 $\frac{1}{2}$ 523

Blackspot's

map 87

843 517 200m radius

Petrol

map 92 973 $\frac{1}{2}$ 236

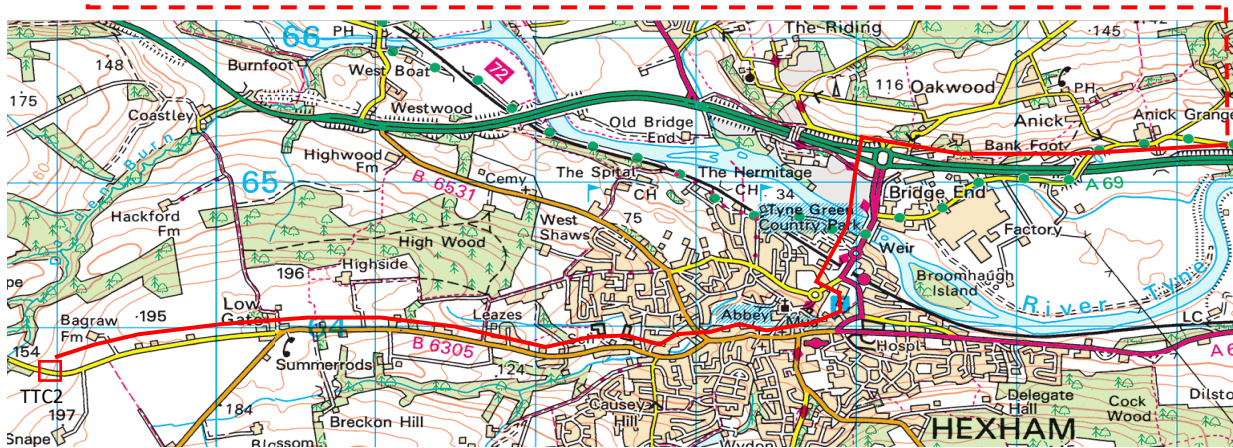
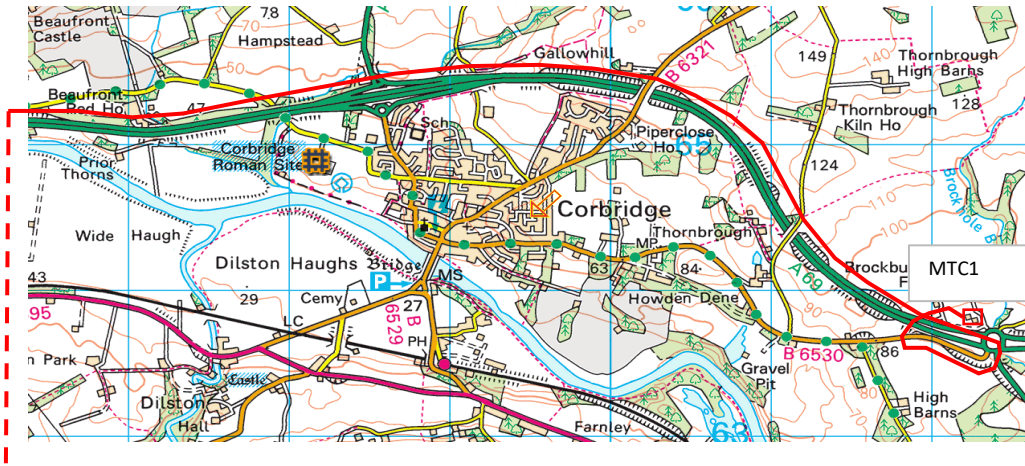
Hexham & District Motor Club



MTC 1 - TTC2

C.R.O.

Follow the route marked on the maps below to find TTC2



Hexham & District Motor Club



TTC 2 - STC 4, via IRTC 3

C.R.O.

NAM 1 @ 1st junction **RC1**

QUIET through Elrington - DSO will be watching

N.A.M. 2 @ 860 642 **RC2**

SGW @ 858¾ 645½ Depart WNW **RC3**

SGW @ next junction (careful joining the A69!) depart WSW

Take next left onto A686

STC 4 @ 827½ 626 Approach from the East

Hexham & District Motor Club



STC 4 - STC 7, via IRTC 5 & IRTC 6

C.R.O.

<p>1</p>	<p>2</p>	<p>3</p>	<p>4</p>
<p>5</p>	<p>6</p>	<p>7</p>	<p>8</p>

STC7 @ 777½ 549

Hexham & District Motor Club



STC 7 - TTC 9, via IRTC 8

C.R.O.

Cross the following grid lines in order

78	54 (N.A.M. 3 RC7)	54	79	55	79		
79	RC8	56	56	80	RC9 @ SGW	81	82
RC10 @ SGW	83	RC11 @ SGW	55	83	RC12 @ SGW	54	53
52	83	84	52	RC13 @ SGW	52	51	

From here go quietly, head south to leave map 87 on the A689

You must hand in time card 1 @ 900 378 on map 92

Then go directly to TTC 9 @ 897½ 368

Hexham & District Motor Club



TTC 9 - STC 12, via IRTC 10 & IRTC 11

C.R.O.

Take the shortest route to STC 12 @ 921½ 277½ (approach WSW)

RC14 @ 897 340½

CAUTION bumps and jumps from the first corner all the way to RC13, **BE CAREFUL!**

Quiet and slow through Newbiggin

Hexham & District Motor Club



STC 12 - TTC 15, via IRTC 13 & IRTC 14

C.R.O.

Go via NAM 3 @ 943 292 **RC15**

TTC 15 @ 957½ 230 (approach NE)

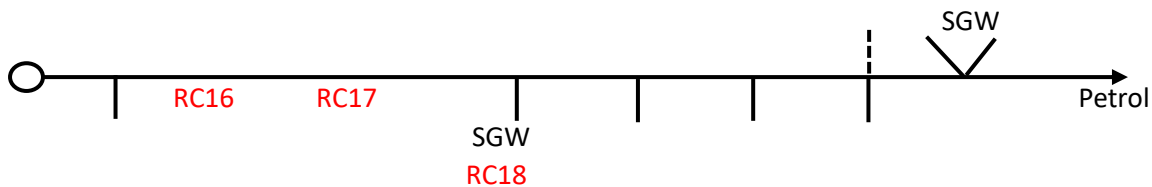
Quiet through Middleton in Teesdale

Hexham & District Motor Club



TTC 15 - MTC18, via IRTC 16, IRTC 17 & Petrol

C.R.O.



This is a small filling station in a residential area, so please try to be efficient and quiet then leave as soon as you are finished.

From here go straight to MTC18 @ 067 290 approach from the SW

SGW @ 000¾ 234¾

Restart from MTC18 on your shedule time if possible, reduce your latness as much as you can!

You will receive roadbook 2 as you book into MTC18

Plot the following SGW junctions while you wait at petrol or MTC18

085 272½

100 305

102 315½

082 353

134 294

074 372

121¾ 301



